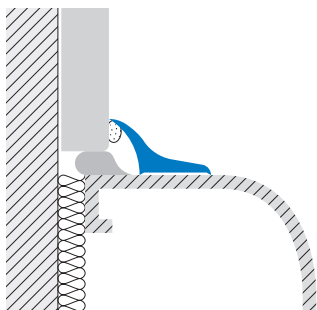




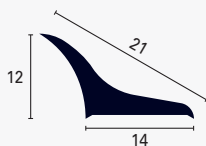
Hygienic corner cove profile between wall and wall or wall and floor. Also apt to join profile bathtub rim and shower tray to wall or kitchen counter tops and wall. Normally the gaps are filled in by mould resistant silicone products but still may turn yellow from discoloration and dirt which can stick to the soft silicone. By installing our profiles the gaps and corners are finally clean, neat but most important of all more hygienic. Supplied with self-adhesive strips or applied with silicone.

sanitec™ SB



SANITEC SB 20 A* Aluminium Powder coated /Silver Anodised

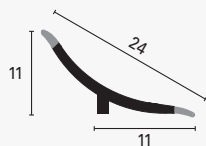
This profile is a polyester powder varnished or in anodised aluminium finish. It is tolerant to oxidation and to most conventional detergents. Furthermore, its UV resistance makes it adaptable to all sorts of environments. Available also without adhesive (A*N).



	AxB	Art.		Ades.	Non Ades.
Material: Powder coated aluminium / Extruded anodised aluminium	12x14 12x14	SB	20	A11A ASA	A11N ASN
Finish: Pure white / Silver					
Length: 2,70 metres					

SANITEC SB 24 P 11 Synthetic Resin

Full coloured whole synthetic resin profile to apply on several coverings. It is particularly adaptable to plastic tubs because the softer external PVC transparent lips allow it better wedge into the gap.

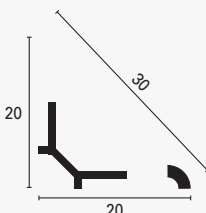


	AxB	Art.		
Material: Resintop	11x11	SB	24	P11
Colori: Pure White with transparent lips				
Length: 2,70 metres				

SANITEC SB 30 P* Synthetic Resin

Full coloured whole synthetic resin profile to apply on several coverings. Its stabilizing properties make the product tolerant to most chemical agents and resistant to slight abrasions.

Junction pieces available in polypropylene. Internal SBI 30 P*, external SBE 30 P*, junction SBG 30 P*, end-cap SBF 30 P.



Material: Resintop	20x20 20x20 20x20	SB SB SB	30 30 30	P11 P22 P30
Colours: Pure white Light grey / Beige				
Length: 2,70 metres				