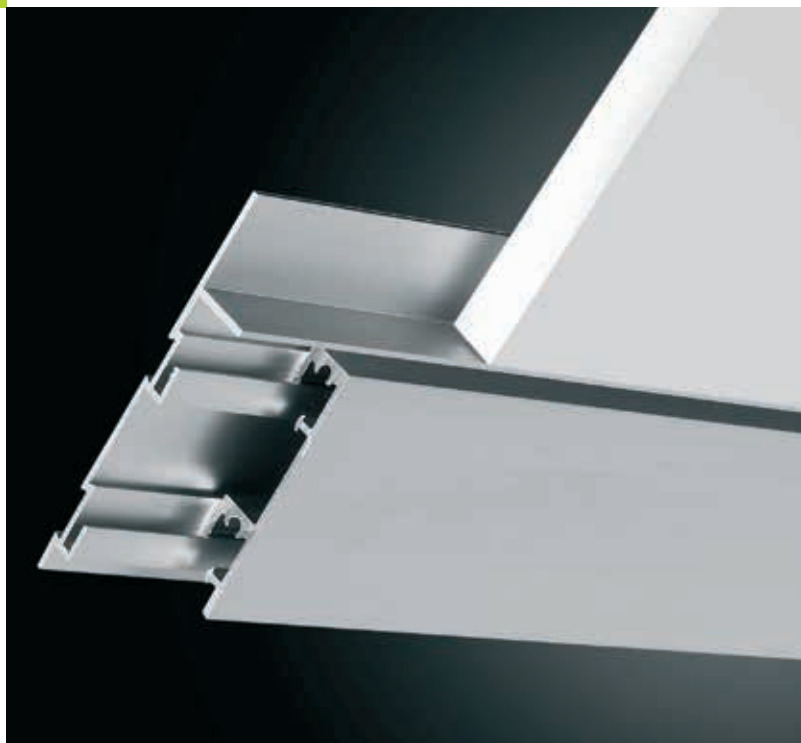
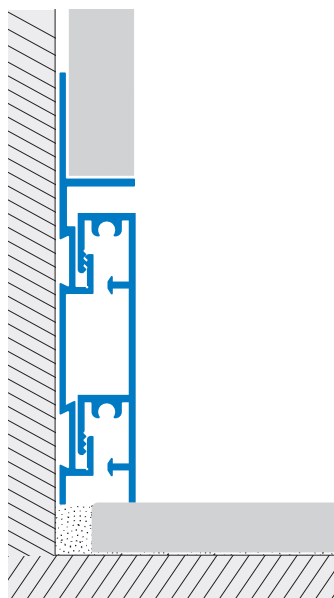




plano BF

“Plano design” is a patented skirting integrated in the wall.
The Plano Design range has been developed to be installed as part of the wall, giving a fully coordinated finish to both the wall and floor and becoming an integral element of the design.
The base of the system is built into the wall structure, being fitted with the plaster and plasterboard (drywall) for a flush finish. The decorative finishing profile then fixes to the base, creating a seamless effect.
The interlocking finishing profile can be adjusted up to 5 mm in height to allow slight undulations in the floor.



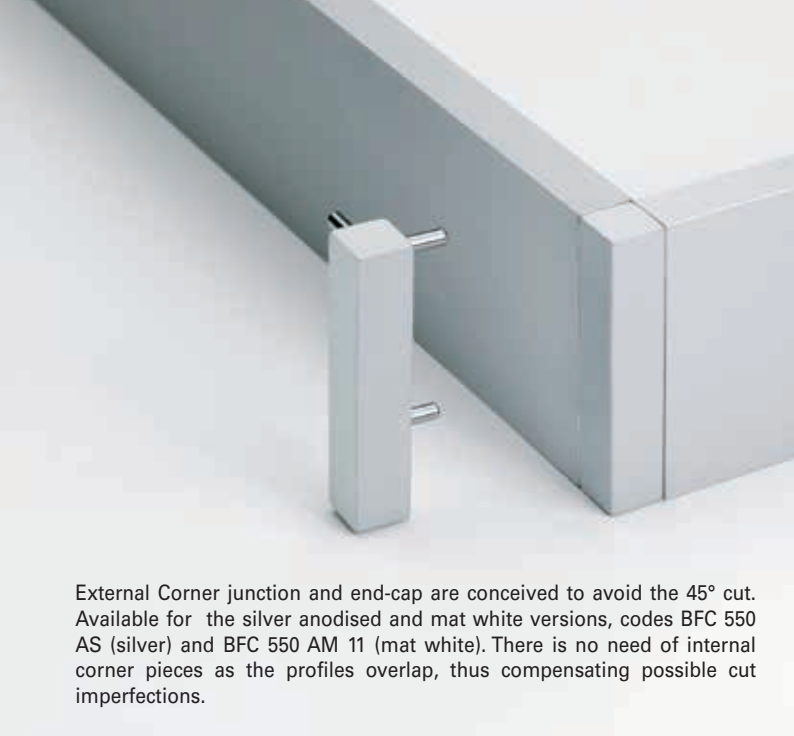
The finishing profile is available in three finishes to co-ordinate with any interior design: a powder coated finish to harmonize with the wall colour, anodised aluminium for a modern look or in an oak finish to complement floors and furniture.

Installazione:

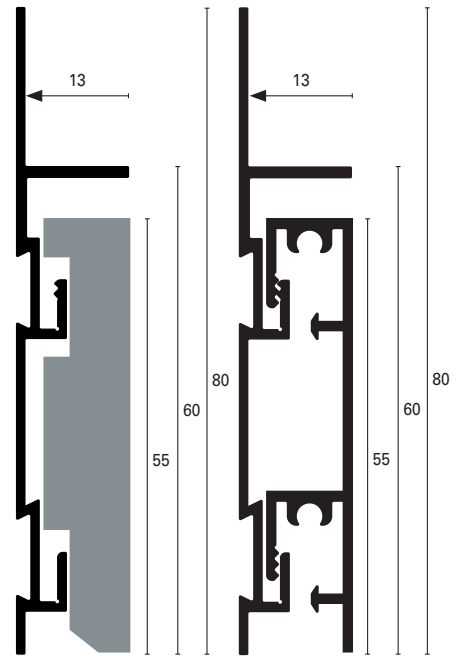
The support profile is installed at the same time as the wall finish to sit flush with the wall, acting as the wall base and allowing the plasterworks to be neatly finished.

The finishing profile is fixed once the floor and wall coverings have been fitted and allows for minor differences in floor height +/- 2, 5 mm.





External Corner junction and end-cap are conceived to avoid the 45° cut. Available for the silver anodised and mat white versions, codes BFC 550 AS (silver) and BFC 550 AM 11 (mat white). There is no need of internal corner pieces as the profiles overlap, thus compensating possible cut imperfections.



Illustrated scale dimension 1:1

PLANO BASE BF 600 ASN Silver Anodised Extruded aluminium

This anodised aluminium profile (ASN) has a silver coating. Good tolerance of the visible side to aluminium natural oxidation.

| | H=mm | Art. | | |
|--|------|------|-----|-----|
| Material: Extruded Anodised aluminium | 60 | BF | 600 | ASN |
| Finish: Silver (ASN) | | | | |
| Length: 2,70 metres | | | | |
| Height BASE: 60 mm | | | | |

PLANOTOP BF 550 RO* Aluminium or wood

This anodised aluminium profile has a silver (AS) coating. Good tolerance of the visible side to aluminium natural oxidation. This aluminium profile is lacquered (AM11) with polyester powder base varnish paint in order to guarantee tolerance against main domestic cleaning products and atmospheric agents as well as UV rays. Wooden Oak profile, available gloss painted (RO) or natural (RON), treatable with a suitable coating or protective oil to achieve the required colour.

| | | | | |
|---|----|----|-----|--------------------|
| Material: Aluminium/ Wood | 55 | BF | 550 | AS/AM11/ RON/RO |
| Finish: Silver (AS), Mat White (AM11), Natural oak (RON), Gloss painted oak (RO) | | | | |
| Length: 2,70 metres | | | | |
| Height TOP: 55 mm | | | | |

| Junction and end - cap | H=mm | Art. | | |
|--|------|------|-----|---------|
| Finish: Silver (AS), Mat white (AM11) | 55 | BFC | 550 | AS/AM11 |